

Design lovers go for

# Cigaro

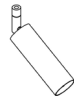


**psmlighting**  
Delighted to help you



2406/.. - CIGARO

=350mA



spotlight - directional - without LED driver

**Lamp type**

1x LED 410lm CRI90 max. 4W

350mA

**Dimensions**

← Ø28xH125 mm

∧ 22°

tube Ø28xH85 mm

**Materials**

aluminum

1M | 2M | 14 | 14M

brass

4 | 13 | 16

Red copper

28 | 56

**Ref**

2406.14M.2M

NW | WW

**Price €**

112,00

2406.1M

NW | WW

104,00

2406.2M

NW | WW

104,00

2406.4.2M

NW | WW

144,00

2406.13.2M

NW | WW

148,00

2406.14.2M

NW | WW

112,00

2406.16.2M

NW | WW

126,00

2406.28.2M

NW | WW

134,00

2406.56.2M

NW | WW

150,00

built-up



**8381.2406/.. - LUCY CIGARO | ON/OFF ADAPTOR**

48V-DC



built-up spot with adaptor - directional

**Lamp type**

1x LED 410lm CRI90 max. 4W 350mA

**Dimensions**

↔ Ø28xH146 mm

**Materials**

aluminum 1M | 2M | 14 | 14M  
brass 4 | 13 | 16  
Red copper 28 | 56

**Ref**

| Ref              |         | Price € |
|------------------|---------|---------|
| 8381.2406.14M.2M | NW   WW | 212,00  |
| 8381.2406.1M     | NW   WW | 204,00  |
| 8381.2406.2M     | NW   WW | 204,00  |
| 8381.2406.4.2M   | NW   WW | 244,00  |
| 8381.2406.13.2M  | NW   WW | 248,00  |
| 8381.2406.14.2M  | NW   WW | 212,00  |
| 8381.2406.16.2M  | NW   WW | 226,00  |
| 8381.2406.28.2M  | NW   WW | 234,00  |
| 8381.2406.56.2M  | NW   WW | 250,00  |

built-up

**8382.2406/.. - LUCY CIGARO | 1-10V ADAPTOR**

48V-DC



built-up spot with adaptor - directional

**Lamp type**

1x LED 410lm CRI90 max. 4W 350mA

**Dimensions**

↔ Ø28xH146 mm

**Materials**

aluminum 1M | 2M | 14 | 14M  
brass 4 | 13 | 16  
Red copper 28 | 56

**Ref**

| Ref              |         | Price € |
|------------------|---------|---------|
| 8382.2406.14M.2M | NW   WW | 237,00  |
| 8382.2406.1M     | NW   WW | 229,00  |
| 8382.2406.2M     | NW   WW | 229,00  |
| 8382.2406.4.2M   | NW   WW | 269,00  |
| 8382.2406.13.2M  | NW   WW | 273,00  |
| 8382.2406.14.2M  | NW   WW | 237,00  |
| 8382.2406.16.2M  | NW   WW | 251,00  |
| 8382.2406.28.2M  | NW   WW | 259,00  |
| 8382.2406.56.2M  | NW   WW | 275,00  |

built-up

**8384.2406/.. - LUCY CIGARO | DALI ADAPTOR**

48V-DC



built-up spot with adaptor - directional

**Lamp type**

1x LED 410lm CRI90 max. 4W 350mA

**Dimensions**

↔ Ø28xH146 mm

**Materials**

aluminum 1M | 2M | 14 | 14M  
brass 4 | 13 | 16  
Red copper 28 | 56

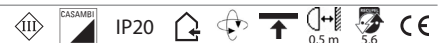
**Ref**

| Ref              |         | Price € |
|------------------|---------|---------|
| 8384.2406.14M.2M | NW   WW | 237,00  |
| 8384.2406.1M     | NW   WW | 229,00  |
| 8384.2406.2M     | NW   WW | 229,00  |
| 8384.2406.4.2M   | NW   WW | 269,00  |
| 8384.2406.13.2M  | NW   WW | 273,00  |
| 8384.2406.14.2M  | NW   WW | 237,00  |
| 8384.2406.16.2M  | NW   WW | 251,00  |
| 8384.2406.28.2M  | NW   WW | 259,00  |
| 8384.2406.56.2M  | NW   WW | 275,00  |

built-up

**8388.2406/.. - LUCY CIGARO | CASAMBI ADAPTOR**

48V-DC



built-up spot with adaptor - directional

**Lamp type**

1x LED 410lm CRI90 max. 4W 350mA

**Dimensions**

↔ Ø28xH146 mm

**Materials**

aluminum 1M | 2M | 14 | 14M  
brass 4 | 13 | 16  
Red copper 28 | 56

**Ref**

| Ref              |         | Price € |
|------------------|---------|---------|
| 8388.2406.14M.2M | NW   WW | 348,00  |
| 8388.2406.1M     | NW   WW | 340,00  |
| 8388.2406.2M     | NW   WW | 340,00  |
| 8388.2406.4.2M   | NW   WW | 380,00  |
| 8388.2406.13.2M  | NW   WW | 384,00  |
| 8388.2406.14.2M  | NW   WW | 348,00  |
| 8388.2406.16.2M  | NW   WW | 362,00  |
| 8388.2406.28.2M  | NW   WW | 370,00  |
| 8388.2406.56.2M  | NW   WW | 386,00  |

built-up

8584.2406/.. - MYLA CIGARO | DALI ADAPTOR

48V-DC



built-up spot with adaptor - fixed - without LED driver

**Lamp type**

1x LED 410lm CRI90 max. 4W

350mA

**Dimensions**

Ø28xH135 mm

22°

**Materials**

aluminum

2M | 14 | 14M

brass

4 | 13 | 16

Red copper

28 | 56

**Ref**

8584.2406.14M.2M

NW | WW

**Price €**

256,00

8584.2406.2M

NW | WW

248,00

8584.2406.4.2M

NW | WW

288,00

8584.2406.13.2M

NW | WW

292,00

8584.2406.14.2M

NW | WW

256,00

8584.2406.16.2M

NW | WW

270,00

8584.2406.28.2M

NW | WW

278,00

8584.2406.56.2M

NW | WW

294,00

built-up

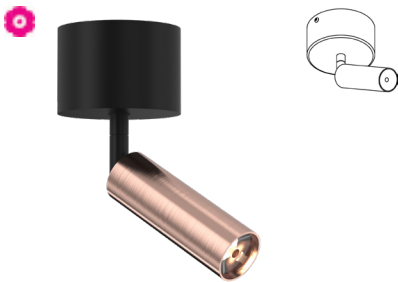


For more info on Lucy & Myla 48V rail, visit [www.psmighting.be](http://www.psmighting.be).






2417/.. - CIGARO

~230V         







built-up

built-up ceiling light - directional - with LED driver  
**Lamp type**  
 1x LED 410lm CRI90 max. 4W  350mA  
**Dimensions**  
 Ø65xH170 mm  22°  
 Base Ø65xH45 mm Spot Ø28xH125 mm  
**Materials**  
 aluminum 1M | 2M | 14 | 14M  
 brass 4 | 13 | 16  
 Red copper 28 | 56




| Ref         |         | Price € |
|-------------|---------|---------|
| 2417.14M.2M | NW   WW | 194,00  |
| 2417.1M     | NW   WW | 186,00  |
| 2417.2M     | NW   WW | 186,00  |
| 2417.4.2M   | NW   WW | 226,00  |
| 2417.13.2M  | NW   WW | 230,00  |
| 2417.14.2M  | NW   WW | 194,00  |
| 2417.16.2M  | NW   WW | 208,00  |
| 2417.28.2M  | NW   WW | 216,00  |
| 2417.56.2M  | NW   WW | 232,00  |

2418/.. - CIGARO

=350mA        



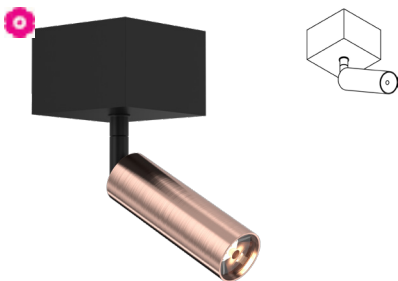
built-up

built-up ceiling light - directional - with base 005 - without LED driver  
**Lamp type**  
 1x LED 410lm CRI90 max. 4W  350mA  
**Dimensions**  
 Ø60xH150 mm  22°  
 Base Ø60xH25 mm Spot Ø28xH125 mm  
**Materials**  
 aluminum 1M | 2M | 14 | 14M  
 brass 4 | 13 | 16  
 Red copper 28 | 56




| Ref         |         | Price € |
|-------------|---------|---------|
| 2418.14M.2M | NW   WW | 164,00  |
| 2418.1M     | NW   WW | 156,00  |
| 2418.2M     | NW   WW | 156,00  |
| 2418.4.2M   | NW   WW | 196,00  |
| 2418.13.2M  | NW   WW | 200,00  |
| 2418.14.2M  | NW   WW | 164,00  |
| 2418.16.2M  | NW   WW | 178,00  |
| 2418.28.2M  | NW   WW | 186,00  |
| 2418.56.2M  | NW   WW | 202,00  |

2424/.. - CIGARO

~230V        








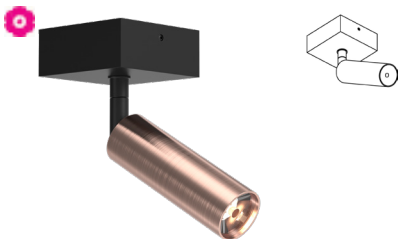
built-up

ceiling light - directional - with LED driver  
**Lamp type**  
 1x LED 410lm CRI90 max. 4W  350mA  
**Dimensions**  
 L65xB65xH170 mm  22°  
 Base L65xB65xH45 mm Spot Ø28xH125 mm  
**Materials**  
 aluminum 1M | 2M | 14 | 14M  
 brass 4 | 13 | 16  
 Red copper 28 | 56




| Ref         |         | Price € |
|-------------|---------|---------|
| 2424.1M     | NW   WW | 184,00  |
| 2424.2M     | NW   WW | 184,00  |
| 2424.4.2M   | NW   WW | 224,00  |
| 2424.13.2M  | NW   WW | 228,00  |
| 2424.14.2M  | NW   WW | 192,00  |
| 2424.14M.2M | NW   WW | 192,00  |
| 2424.16.2M  | NW   WW | 206,00  |
| 2424.28.2M  | NW   WW | 214,00  |
| 2424.56.2M  | NW   WW | 230,00  |

2426/.. - CIGARO

=350mA        



built-up

ceiling light - directional - with base 025 - without LED driver  
**Lamp type**  
 1x LED 410lm CRI90 max. 4W  350mA  
**Dimensions**  
 L60xB60xH150 mm  22°  
 Base L60xB60xH25 mm Spot Ø28xH125 mm  
**Materials**  
 aluminum 1M | 2M | 14 | 14M  
 brass 4 | 13 | 16  
 Red copper 28 | 56

| Ref         |         | Price € |
|-------------|---------|---------|
| 2426.1M     | NW   WW | 148,00  |
| 2426.2M     | NW   WW | 148,00  |
| 2426.4.2M   | NW   WW | 188,00  |
| 2426.13.2M  | NW   WW | 192,00  |
| 2426.14.2M  | NW   WW | 156,00  |
| 2426.14M.2M | NW   WW | 156,00  |
| 2426.16.2M  | NW   WW | 170,00  |
| 2426.28.2M  | NW   WW | 182,00  |
| 2426.56.2M  | NW   WW | 194,00  |

2399/.. - CIGARO

=350mA



spotlight - directional - without LED driver

Lamp type

1x LED 410lm CRI90 max. 4W

350mA

Dimensions

Ø50xH97 mm

Ø40 mm

22°

tube Ø28xH85 mm

Materials

aluminum

1M | 2M | 14 | 14M

brass

4 | 13 | 16

Red copper

28 | 56

Ref

2399.14M.2M

NW | WW

Price €

150,00

2399.1M

NW | WW

140,00

2399.2M

NW | WW

140,00

2399.4.2M

NW | WW

188,00

2399.13.2M

NW | WW

192,00

2399.14.2M

NW | WW

150,00

2399.16.2M

NW | WW

166,00

2399.28.2M

NW | WW

174,00

2399.56.2M

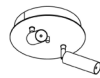
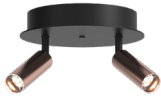
NW | WW

186,00

semi built-in/up  
with swivel - 360° directional

2419/.. - CIGARO

~230V



built-up ceiling light - directional - with Rondobox base - with LED driver

Lamp type

2x LED 410lm CRI90 max. 4W

350mA

Dimensions

Ø150xH157 mm

22°

Base Ø170xH32 mm

Ø150xH30 mm

Materials

aluminum

1M | 2M | 14 | 14M

brass

4 | 13 | 16

Red copper

28 | 56

Ref

2419.14M.2M

NW | WW

Price €

374,00

2419.1M

NW | WW

358,00

2419.2M

NW | WW

358,00

2419.4.2M

NW | WW

438,00

2419.13.2M

NW | WW

446,00

2419.14.2M

NW | WW

374,00

2419.16.2M

NW | WW

402,00

2419.28.2M

NW | WW

418,00

2419.56.2M

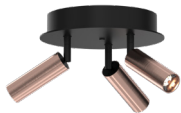
NW | WW

450,00

built-up

2421/.. - CIGARO

~230V



built-up ceiling light - directional - with Rondobox base - with LED driver

Lamp type

3x LED 410lm CRI90 max. 4W

350mA

Dimensions

Ø170xH157 mm

22°

Base Ø170xH32 mm

Ø150xH30 mm

Materials

aluminum

1M | 2M | 14 | 14M

brass

4 | 13 | 16

Red copper

28 | 56

Ref

2421.14M.2M

NW | WW

Price €

522,00

2421.1M

NW | WW

498,00

2421.2M

NW | WW

498,00

2421.4.2M

NW | WW

618,00

2421.13.2M

NW | WW

630,00

2421.14.2M

NW | WW

522,00

2421.16.2M

NW | WW

564,00

2421.28.2M

NW | WW

562,00

2421.56.2M

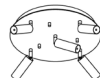
NW | WW

610,00

built-up

2422/.. - CIGARO

~230V



built-up ceiling light - directional - with Rondobox base - with LED driver

Lamp type

5x LED 410lm CRI90 max. 4W

350mA

Dimensions

Ø300xH153 mm

22°

Base Ø300xH28 mm

Ø270xH26 mm

Materials

aluminum

1M | 2M | 14 | 14M

brass

4 | 13 | 16

Red copper

28 | 56

Ref

2422.14M.2M

NW | WW

Price €

930,00

2422.1M

NW | WW

850,00

2422.2M

NW | WW

850,00

2422.4.2M

NW | WW

1.050,00

2422.13.2M

NW | WW

1.070,00

2422.14.2M

NW | WW

930,00

2422.16.2M

NW | WW

960,00

2422.28.2M

NW | WW

1.000,00

2422.56.2M

NW | WW

1.078,00

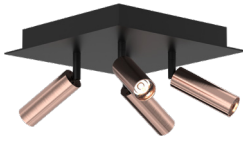
built-up





2455/.. - CIGARO

~230V



built-up ceiling light - directional - with Texo base - with LED driver

**Lamp type**

4x LED 410lm CRI90 max. 4W

350mA

**Dimensions**

L215xB215xH157 mm  $\angle$  22°

Base L215xB215xH32 mm L185xB185xH30 mm

Spot Ø28xH125 mm

**Materials**

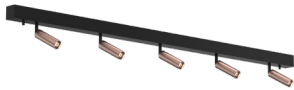
aluminum 1M | 2M | 14 | 14M  
brass 4 | 13 | 16  
Red copper 28 | 56

| Ref         |         | Price € |
|-------------|---------|---------|
| 2455.14M.2M | NW   WW | 623,00  |
| 2455.1M     | NW   WW | 591,00  |
| 2455.2M     | NW   WW | 591,00  |
| 2455.4.2M   | NW   WW | 751,00  |
| 2455.13.2M  | NW   WW | 767,00  |
| 2455.14.2M  | NW   WW | 623,00  |
| 2455.16.2M  | NW   WW | 679,00  |
| 2455.28.2M  | NW   WW | 711,00  |
| 2455.56.2M  | NW   WW | 775,00  |

built-up

2456/.. - CIGARO

~230V



ceiling light - directional - with Juba base - with LED driver

**Lamp type**

5x LED 410lm CRI90 max. 4W

350mA

**Dimensions**

L1200xB40xH165 mm  $\angle$  22°

Base L1200xB40xH40 mm Spot Ø28xH125 mm

**Materials**

aluminum 1M | 2M | 14 | 14M  
brass 4 | 13 | 16  
Red copper 28 | 56

| Ref         |         | Price €  |
|-------------|---------|----------|
| 2456.14M.2M | NW   WW | 926,00   |
| 2456.1M     | NW   WW | 886,00   |
| 2456.2M     | NW   WW | 886,00   |
| 2456.4.2M   | NW   WW | 1.086,00 |
| 2456.13.2M  | NW   WW | 1.106,00 |
| 2456.14.2M  | NW   WW | 926,00   |
| 2456.16.2M  | NW   WW | 996,00   |
| 2456.28.2M  | NW   WW | 1.036,00 |
| 2456.56.2M  | NW   WW | 1.116,00 |

built-up





# INDOOR | Ceiling UP | Luminaires | CIGARO

## 2460/.. - CIGARO



=350mA



built-up ceiling light - fixed - without LED driver

### Lamp type

1x LED 410lm CRI90 max. 4W

350mA

### Dimensions

←→ Ø28xH85 mm



### Materials

aluminum 1M | 2M | 14 | 14M  
brass 4 | 16  
Red copper 28 | 56

| Ref      |         | Price € |
|----------|---------|---------|
| 2460.14M | NW   WW | 100,00  |
| 2460.1M  | NW   WW | 92,00   |
| 2460.2M  | NW   WW | 92,00   |
| 2460.4   | NW   WW | 140,00  |
| 2460.14  | NW   WW | 100,00  |
| 2460.16  | NW   WW | 122,00  |
| 2460.28  | NW   WW | 122,00  |
| 2460.56  | NW   WW | 138,00  |

built-up

## 2461/.. - CIGARO



=350mA



built-up ceiling light - fixed - without LED driver

### Lamp type

1x LED 410lm CRI90 max. 4W

350mA

### Dimensions

←→ Ø28xH150 mm



### Materials

aluminum 1M | 2M | 14 | 14M  
brass 4 | 16  
Red copper 28 | 56

| Ref      |         | Price € |
|----------|---------|---------|
| 2461.14M | NW   WW | 122,00  |
| 2461.1M  | NW   WW | 112,00  |
| 2461.2M  | NW   WW | 112,00  |
| 2461.4   | NW   WW | 156,00  |
| 2461.14  | NW   WW | 122,00  |
| 2461.16  | NW   WW | 133,00  |
| 2461.28  | NW   WW | 141,00  |
| 2461.56  | NW   WW | 166,00  |

built-up

## 2462/.. - CIGARO



=350mA



built-up ceiling light - fixed - without LED driver

### Lamp type

1x LED 410lm CRI90 max. 4W

350mA

### Dimensions

←→ Ø28xH200 mm



### Materials

aluminum 1M | 2M | 14 | 14M  
brass 4 | 16  
Red copper 28 | 56

| Ref      |         | Price € |
|----------|---------|---------|
| 2462.14M | NW   WW | 132,00  |
| 2462.1M  | NW   WW | 120,00  |
| 2462.2M  | NW   WW | 120,00  |
| 2462.4   | NW   WW | 160,00  |
| 2462.14  | NW   WW | 132,00  |
| 2462.16  | NW   WW | 136,00  |
| 2462.28  | NW   WW | 147,00  |
| 2462.56  | NW   WW | 174,00  |

built-up

## 2463/.. - CIGARO



=350mA



built-up ceiling light - fixed - without LED driver

### Lamp type

1x LED 410lm CRI90 max. 4W

350mA

### Dimensions

←→ Ø28xH250 mm



### Materials

aluminum 1M | 2M | 14 | 14M  
brass 4 | 16  
Red copper 28 | 56

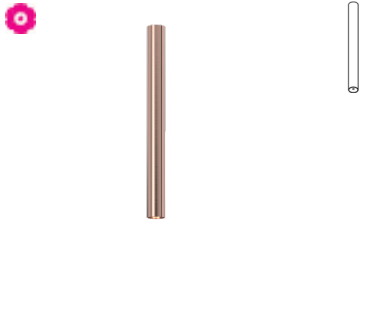


| Ref      |         | Price € |
|----------|---------|---------|
| 2463.14M | NW   WW | 138,00  |
| 2463.1M  | NW   WW | 124,00  |
| 2463.2M  | NW   WW | 124,00  |
| 2463.4   | NW   WW | 182,00  |
| 2463.14  | NW   WW | 138,00  |
| 2463.16  | NW   WW | 150,00  |
| 2463.28  | NW   WW | 152,00  |
| 2463.56  | NW   WW | 186,00  |

built-up

2464/.. - CIGARO

=350mA



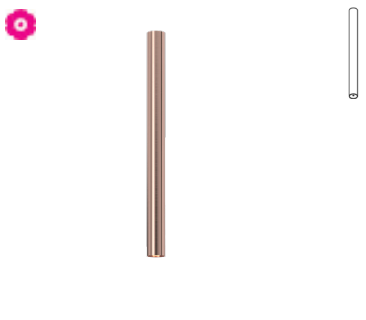


|   |  |  |            |                |
|---|--|--|------------|----------------|
|  | built-up ceiling light - fixed - without LED driver  |  | <b>Ref</b> | <b>Price €</b> |
|   | <b>Lamp type</b>   |  | 2464.14M   | NW   WW 146,00 |
|   | 1x LED 410lm CRI90 max. 4W  350mA |  | 2464.1M    | NW   WW 128,00 |
|   | <b>Dimensions</b>  |  | 2464.2M    | NW   WW 128,00 |
|   | ↔ Ø28xH300 mm  22°                |  | 2464.4     | NW   WW 192,00 |
|   | <b>Materials</b>   |  | 2464.14    | NW   WW 146,00 |
|   | aluminum 1M   2M   14   14M  |  | 2464.16    | NW   WW 158,00 |
|   | brass 4   16   |  | 2464.28    | NW   WW 162,00 |
|   | Red copper 28   56   |  | 2464.56    | NW   WW 196,00 |

built-up

2465/.. - CIGARO

=350mA



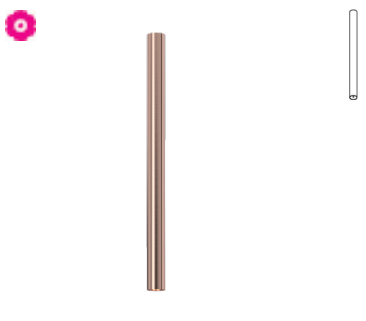


|  |  |  |            |                |
|--|--|--|------------|----------------|
|  | built-up ceiling light - fixed - without LED driver  |  | <b>Ref</b> | <b>Price €</b> |
|  | <b>Lamp type</b>   |  | 2465.14M   | NW   WW 151,00 |
|  | 1x LED 410lm CRI90 max. 4W  350mA |  | 2465.1M    | NW   WW 132,00 |
|  | <b>Dimensions</b>  |  | 2465.2M    | NW   WW 132,00 |
|  | ↔ Ø28xH350 mm  22°                |  | 2465.4     | NW   WW 198,00 |
|  | <b>Materials</b>   |  | 2465.14    | NW   WW 151,00 |
|  | aluminum 1M   2M   14   14M  |  | 2465.16    | NW   WW 162,00 |
|  | brass 4   16   |  | 2465.28    | NW   WW 168,00 |
|  | Red copper 28   56   |  | 2465.56    | NW   WW 202,00 |

built-up

2466/.. - CIGARO

=350mA



|   |  |  |            |                |
|---|--|--|------------|----------------|
|  | built-up ceiling light - fixed - without LED driver  |  | <b>Ref</b> | <b>Price €</b> |
|   | <b>Lamp type</b>   |  | 2466.14M   | NW   WW 156,00 |
|   | 1x LED 410lm CRI90 max. 4W  350mA |  | 2466.1M    | NW   WW 136,00 |
|   | <b>Dimensions</b>  |  | 2466.2M    | NW   WW 136,00 |
|   | ↔ Ø28xH400 mm  22°                |  | 2466.4     | NW   WW 210,00 |
|   | <b>Materials</b>   |  | 2466.14    | NW   WW 156,00 |
|   | aluminum 1M   2M   14   14M  |  | 2466.16    | NW   WW 172,00 |
|   | brass 4   16   |  | 2466.28    | NW   WW 174,00 |
|   | Red copper 28   56   |  | 2466.56    | NW   WW 208,00 |

built-up



# INDOOR | Ceiling UP | Luminaires | CIGARO

## 2470/.. - CIGARO

~230V



built-up ceiling light - fixed - with LED driver

### Lamp type

1x LED 410lm CRI90 max. 4W

350mA

### Dimensions

← Ø65xH130 mm

∧ 22°

Base Ø65xH45 mm

tube Ø28xH85 mm

### Materials

aluminum

1M | 2M | 14 | 14M

brass

4 | 13 | 16

Red copper

28 | 56

### Ref

2470.14M.2M

NW | WW

### Price €

182,00

2470.1M

NW | WW

174,00

2470.2M

NW | WW

174,00

2470.4.2M

NW | WW

222,00

2470.13.2M

NW | WW

226,00

2470.14.2M

NW | WW

182,00

2470.16.2M

NW | WW

204,00

2470.28.2M

NW | WW

204,00

2470.56.2M

NW | WW

216,00

built-up

## 2475/.. - CIGARO

=350mA



ceiling light - fixed - with base 005 - without LED driver

### Lamp type

1x LED 410lm CRI90 max. 4W

350mA

### Dimensions

← Ø60xH110 mm

∧ 22°

Base Ø60xH25 mm

tube Ø28xH85 mm

### Materials

aluminum

1M | 2M | 14 | 14M

brass

4 | 13 | 16

Red copper

28 | 56

### Ref

2475.14M.2M

NW | WW

### Price €

152,00

2475.1M

NW | WW

144,00

2475.2M

NW | WW

144,00

2475.4.2M

NW | WW

192,00

2475.13.2M

NW | WW

196,00

2475.14.2M

NW | WW

152,00

2475.16.2M

NW | WW

174,00

2475.28.2M

NW | WW

174,00

2475.56.2M

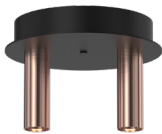
NW | WW

192,00

built-up

## 2471/.. - CIGARO

~230V



built-up ceiling light - fixed - with Rondobox base - with LED driver

### Lamp type

2x LED 410lm CRI90 max. 4W

350mA

### Dimensions

← Ø170xH115 mm

∧ 22°

Base Ø170xH32 mm

Ø150xH30 mm

tube Ø28xH85 mm

### Materials

aluminum

1M | 2M | 14 | 14M

brass

4 | 13 | 16

Red copper

28 | 56

### Ref

2471.14M.2M

NW | WW

### Price €

350,00

2471.1M

NW | WW

334,00

2471.2M

NW | WW

334,00

2471.4.2M

NW | WW

430,00

2471.13.2M

NW | WW

438,00

2471.14.2M

NW | WW

350,00

2471.16.2M

NW | WW

394,00

2471.28.2M

NW | WW

394,00

2471.56.2M

NW | WW

426,00

built-up



2472/.. - CIGARO

~230V



built-up ceiling light - fixed - with Rondobox base - with LED driver

**Lamp type**

3x LED 410lm CRI90 max. 4W

350mA

**Dimensions**

Ø170xH282 mm

22°

Base Ø170xH32 mm

Ø150xH30 mm

tube Ø28xH150 mm

tube Ø28xH200 mm

tube Ø28xH250 mm

**Materials**

aluminum 1M | 2M | 14 | 14M

brass 4 | 16

Red copper 28 | 56

| Ref         |         | Price € |
|-------------|---------|---------|
| 2472.14M.2M | NW   WW | 569,00  |
| 2472.1M     | NW   WW | 533,00  |
| 2472.2M     | NW   WW | 533,00  |
| 2472.4.2M   | NW   WW | 675,00  |
| 2472.14.2M  | NW   WW | 569,00  |
| 2472.16.2M  | NW   WW | 596,00  |
| 2472.28.2M  | NW   WW | 617,00  |
| 2472.56.2M  | NW   WW | 703,00  |

built-up

2473/.. - CIGARO

~230V



built-up ceiling light - fixed - with Rondobox base - with LED driver

**Lamp type**

5x LED 410lm CRI90 max. 4W

350mA

**Dimensions**

Ø300xH328 mm

22°

Base Ø300xH28 mm

Ø270xH26 mm

tube Ø28xH150 mm

tube Ø28xH200 mm

tube Ø28xH250 mm

tube Ø28xH300 mm

**Materials**

aluminum 1M | 2M | 14 | 14M

brass 4 | 16

Red copper 28 | 56

| Ref         |         | Price €  |
|-------------|---------|----------|
| 2473.14M.2M | NW   WW | 986,00   |
| 2473.1M     | NW   WW | 928,00   |
| 2473.2M     | NW   WW | 928,00   |
| 2473.4.2M   | NW   WW | 1.154,00 |
| 2473.14.2M  | NW   WW | 986,00   |
| 2473.16.2M  | NW   WW | 1.028,00 |
| 2473.28.2M  | NW   WW | 1.068,00 |
| 2473.56.2M  | NW   WW | 1.206,00 |

built-up

1x 150mm - 2x 200mm - 1x 250mm - 1x 300mm

2474/.. - CIGARO

~230V



built-up ceiling light - fixed - with Rondobox base - with LED driver

**Lamp type**

7x LED 410lm CRI90 max. 4W

350mA

**Dimensions**

Ø350xH328 mm

22°

Base Ø350xH28 mm

Ø320xH26 mm

tube Ø28xH150 mm

tube Ø28xH200 mm

tube Ø28xH250 mm

tube Ø28xH300 mm

**Materials**

aluminum 1M | 2M | 14 | 14M

brass 4 | 16

Red copper 28 | 56

| Ref         |         | Price €  |
|-------------|---------|----------|
| 2474.14M.2M | NW   WW | 1.300,00 |
| 2474.1M     | NW   WW | 1.210,00 |
| 2474.2M     | NW   WW | 1.210,00 |
| 2474.4.2M   | NW   WW | 1.558,00 |
| 2474.14.2M  | NW   WW | 1.300,00 |
| 2474.16.2M  | NW   WW | 1.366,00 |
| 2474.28.2M  | NW   WW | 1.412,00 |
| 2474.56.2M  | NW   WW | 1.618,00 |

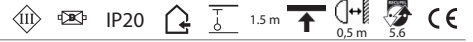
built-up

1x85mm - 3x 150mm - 1x 200mm - 1x 250mm - 1x 300mm

# INDOOR | Ceiling UP | Pendants | CIGARO

## 2420.150/.. - CIGARO

=350mA



pendant - fixed - with 1,5m cable Ø3mm and strain relief on lampholder's side - without LED driver

### Lamp type

1x LED 410lm CRI90 max. 4W  350mA

### Dimensions

↔ Ø28xH162 mm Cable 1500 mm

∧ 22°

### Materials

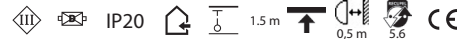
aluminum 1M | 2M | 14 | 14M  
brass 4 | 16  
Red copper 28 | 56

*built-up*  
with extra thin cable Ø3mm

| Ref              |         | Price € |
|------------------|---------|---------|
| 2420.150.1M.KX1  | NW   WW | 128,00  |
| 2420.150.2M.KX2  | NW   WW | 128,00  |
| 2420.150.4.KX2   | NW   WW | 180,00  |
| 2420.150.14.KX2  | NW   WW | 138,00  |
| 2420.150.14M.KX2 | NW   WW | 138,00  |
| 2420.150.16.KX2  | NW   WW | 157,00  |
| 2420.150.28.KX2  | NW   WW | 165,00  |
| 2420.150.56.KX2  | NW   WW | 190,00  |

## 2420.200/.. - CIGARO

=350mA



pendant - fixed - with 1,5m cable Ø3mm and strain relief on lampholder's side - without LED driver

### Lamp type

1x LED 410lm CRI90 max. 4W  350mA

### Dimensions

↔ Ø28xH212 mm Cable 1500 mm

∧ 22°

### Materials

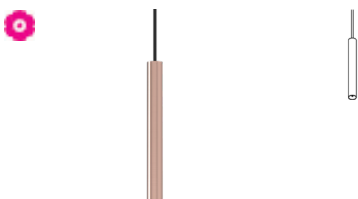
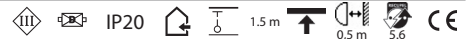
aluminum 1M | 2M | 14 | 14M  
brass 4 | 16  
Red copper 28 | 56

*built-up*  
with extra thin cable Ø3mm

| Ref              |         | Price € |
|------------------|---------|---------|
| 2420.200.14M.KX2 | NW   WW | 148,00  |
| 2420.200.1M.KX1  | NW   WW | 136,00  |
| 2420.200.2M.KX2  | NW   WW | 136,00  |
| 2420.200.4.KX2   | NW   WW | 184,00  |
| 2420.200.14.KX2  | NW   WW | 148,00  |
| 2420.200.16.KX2  | NW   WW | 160,00  |
| 2420.200.28.KX2  | NW   WW | 171,00  |
| 2420.200.56.KX2  | NW   WW | 198,00  |

## 2420.250/.. - CIGARO

=350mA



pendant - fixed - with 1,5m cable Ø3mm and strain relief on lampholder's side - without LED driver

### Lamp type

1x LED 410lm CRI90 max. 4W  350mA

### Dimensions

↔ Ø28xH262 mm Cable 1500 mm

∧ 22°

### Materials

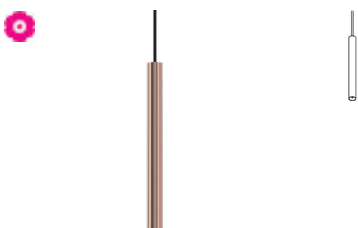
aluminum 1M | 2M | 14 | 14M  
brass 4 | 16  
Red copper 28 | 56

*built-up*  
with extra thin cable Ø3mm

| Ref              |         | Price € |
|------------------|---------|---------|
| 2420.250.14M.KX2 | NW   WW | 154,00  |
| 2420.250.1M.KX1  | NW   WW | 140,00  |
| 2420.250.2M.KX2  | NW   WW | 140,00  |
| 2420.250.4.KX2   | NW   WW | 206,00  |
| 2420.250.14.KX2  | NW   WW | 154,00  |
| 2420.250.16.KX2  | NW   WW | 174,00  |
| 2420.250.28.KX2  | NW   WW | 176,00  |
| 2420.250.56.KX2  | NW   WW | 210,00  |

## 2420.300/.. - CIGARO

=350mA



pendant - fixed - with 1,5m cable Ø3mm and strain relief on lampholder's side - without LED driver

### Lamp type

1x LED 410lm CRI90 max. 4W  350mA

### Dimensions

↔ Ø28xH312 mm Cable 1500 mm

∧ 22°

### Materials

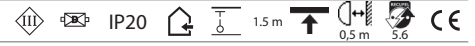
aluminum 1M | 2M | 14 | 14M  
brass 4 | 16  
Red copper 28 | 56

*built-up*  
with extra thin cable Ø3mm

| Ref              |         | Price € |
|------------------|---------|---------|
| 2420.300.14M.KX2 | NW   WW | 162,00  |
| 2420.300.1M.KX1  | NW   WW | 144,00  |
| 2420.300.2M.KX2  | NW   WW | 144,00  |
| 2420.300.4.KX2   | NW   WW | 216,00  |
| 2420.300.14.KX2  | NW   WW | 162,00  |
| 2420.300.16.KX2  | NW   WW | 182,00  |
| 2420.300.28.KX2  | NW   WW | 186,00  |
| 2420.300.56.KX2  | NW   WW | 220,00  |

2420.350/.. - CIGARO

=350mA



*built-up*  
with extra thin cable Ø3mm

pendant - fixed - with 1,5m cable Ø3mm and strain relief on lampholder's side - without LED driver

**Lamp type**

1x LED 410lm CRI90 max. 4W

350mA

**Dimensions**

←→ Ø28xH362 mm

Cable 1500 mm

∧ 22°

**Materials**

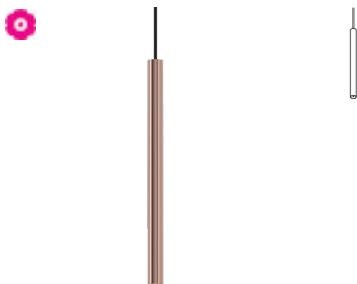
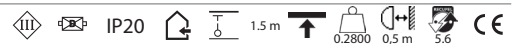
aluminum 1M | 2M | 14 | 14M  
brass 4 | 16  
Red copper 28 | 56

**Ref**

| Ref              |         | Price € |
|------------------|---------|---------|
| 2420.350.14M.KX2 | NW   WW | 167,00  |
| 2420.350.1M.KX1  | NW   WW | 148,00  |
| 2420.350.2M.KX2  | NW   WW | 148,00  |
| 2420.350.4.KX2   | NW   WW | 222,00  |
| 2420.350.14.KX2  | NW   WW | 167,00  |
| 2420.350.16.KX2  | NW   WW | 186,00  |
| 2420.350.28.KX2  | NW   WW | 192,00  |
| 2420.350.56.KX2  | NW   WW | 226,00  |

2420.400/.. - CIGARO

=350mA



*built-up*  
with extra thin cable Ø3mm

pendant - fixed - with 1,5m cable Ø3mm and strain relief on lampholder's side - without LED driver

**Lamp type**

1x LED 410lm CRI90 max. 4W

350mA

**Dimensions**

←→ Ø28xH412 mm

Cable 1500 mm

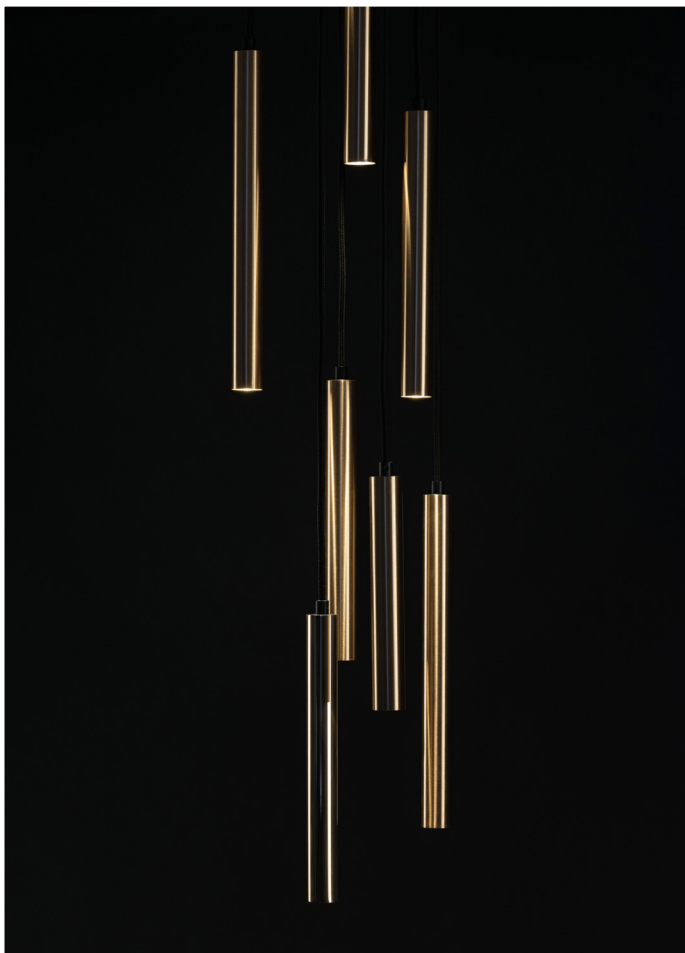
∧ 22°

**Materials**

aluminum 1M | 2M | 14 | 14M  
brass 4 | 16  
Red copper 28 | 56

**Ref**

| Ref              |         | Price € |
|------------------|---------|---------|
| 2420.400.14M.KX2 | NW   WW | 172,00  |
| 2420.400.1M.KX1  | NW   WW | 152,00  |
| 2420.400.2M.KX2  | NW   WW | 152,00  |
| 2420.400.4.KX2   | NW   WW | 234,00  |
| 2420.400.14.KX2  | NW   WW | 172,00  |
| 2420.400.16.KX2  | NW   WW | 196,00  |
| 2420.400.28.KX2  | NW   WW | 198,00  |
| 2420.400.56.KX2  | NW   WW | 232,00  |

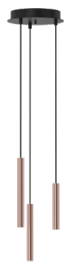




# INDOOR | Ceiling UP | Pendants | CIGARO

## 2423/.. - CIGARO

~230V



pendant - fixed - with Rondobox base - with LED driver

### Lamp type

3x LED 410lm CRI90 max. 4W

350mA

### Dimensions

Ø250xH1750 mm

Cable 1500 mm

22°

Base Ø250xH28 mm

Ø220xH26 mm

tube Ø28xH200 mm

tube Ø28xH250 mm

tube Ø28xH300 mm

### Materials

aluminum 1M | 2M | 14 | 14M

brass 4 | 16

Red copper 28 | 56

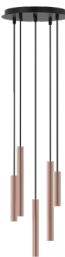
### Ref

| Ref             |         | Price € |
|-----------------|---------|---------|
| 2423.1M.KX1     | NW   WW | 561,00  |
| 2423.2M.KX2     | NW   WW | 561,00  |
| 2423.4.2M.KX2   | NW   WW | 727,00  |
| 2423.14.2M.KX2  | NW   WW | 597,00  |
| 2423.14M.2M.KX2 | NW   WW | 597,00  |
| 2423.16.2M.KX2  | NW   WW | 648,00  |
| 2423.28.2M.KX2  | NW   WW | 669,00  |
| 2423.56.2M.KX2  | NW   WW | 781,00  |

**built-up**  
with extra thin cable Ø3mm  
1x 200mm - 1x 250mm - 1x 300mm

## 2425/.. - CIGARO

~230V



pendant - fixed - with Rondobox base - with LED driver

### Lamp type

5x LED 410lm CRI90 max. 4W

350mA

### Dimensions

Ø300xH1800 mm

Cable 1500 mm

22°

Base Ø300xH28 mm

Ø270xH26 mm

tube Ø28xH150 mm

tube Ø28xH200 mm

tube Ø28xH250 mm

tube Ø28xH300 mm

tube Ø28xH350 mm

### Materials

aluminum 1M | 2M | 14 | 14M

brass 4 | 16

Red copper 28 | 56

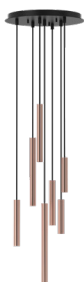
### Ref

| Ref             |         | Price €  |
|-----------------|---------|----------|
| 2425.1M.KX1     | NW   WW | 1.024,00 |
| 2425.2M.KX2     | NW   WW | 1.024,00 |
| 2425.4.2M.KX2   | NW   WW | 1.310,00 |
| 2425.14.2M.KX2  | NW   WW | 1.090,00 |
| 2425.14M.2M.KX2 | NW   WW | 1.090,00 |
| 2425.16.2M.KX2  | NW   WW | 1.173,00 |
| 2425.28.2M.KX2  | NW   WW | 1.209,00 |
| 2425.56.2M.KX2  | NW   WW | 1.356,00 |

**built-up**  
with extra thin cable Ø3mm  
1x 150mm - 1x 200mm - 1x 250mm - 1x 300mm - 1x 350mm

## 2427/.. - CIGARO

~230V



pendant - fixed - with Rondobox base - with LED driver

### Lamp type

7x LED 410lm CRI90 max. 4W

350mA

### Dimensions

Ø350xH1800 mm

Cable 1500 mm

22°

Base Ø350xH28 mm

Ø320xH26 mm

tube Ø28xH150 mm

tube Ø28xH200 mm

tube Ø28xH250 mm

tube Ø28xH300 mm

tube Ø28xH350 mm

### Materials

aluminum 1M | 2M | 14 | 14M

brass 4 | 16

Red copper 28 | 56

### Ref

| Ref             |         | Price €  |
|-----------------|---------|----------|
| 2427.1M.KX1     | NW   WW | 1.345,00 |
| 2427.2M.KX2     | NW   WW | 1.345,00 |
| 2427.4.2M.KX2   | NW   WW | 1.749,00 |
| 2427.14.2M.KX2  | NW   WW | 1.435,00 |
| 2427.14M.2M.KX2 | NW   WW | 1.435,00 |
| 2427.16.2M.KX2  | NW   WW | 1.557,00 |
| 2427.28.2M.KX2  | NW   WW | 1.603,00 |
| 2427.56.2M.KX2  | NW   WW | 1.809,00 |

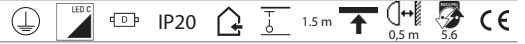
**built-up**  
with extra thin cable Ø3mm  
2x 150mm - 2x 200mm - 1x 250mm - 1x 300mm - 1x 350mm



# INDOOR | Ceiling UP | Pendants | CIGARO

## 2428/.. - CIGARO

~230V



*built-up*  
with extra thin cable Ø3mm

pendant - fixed - with Juba base - with LED driver

### Lamp type

3x LED 410lm CRI90 max. 4W

350mA

### Dimensions

L600xB40xH1700 mm Cable 1500 mm

22°

Base L600xB40xH40 mm

tube Ø28xH200 mm

### Materials

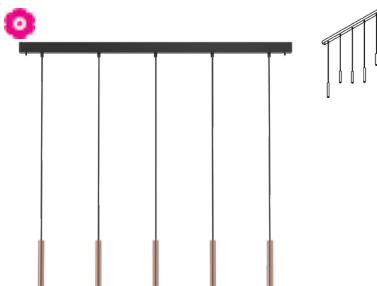
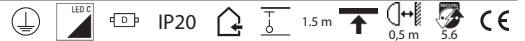
aluminum 1M | 2M | 14 | 14M  
brass 4 | 16  
Red copper 28 | 56

### Ref

| Ref             |         | Price € |
|-----------------|---------|---------|
| 2428.1M.KX1     | NW   WW | 677,00  |
| 2428.2M.KX2     | NW   WW | 677,00  |
| 2428.4.2M.KX2   | NW   WW | 821,00  |
| 2428.14.2M.KX2  | NW   WW | 713,00  |
| 2428.14M.2M.KX2 | NW   WW | 713,00  |
| 2428.16.2M.KX2  | NW   WW | 749,00  |
| 2428.28.2M.KX2  | NW   WW | 782,00  |
| 2428.56.2M.KX2  | NW   WW | 863,00  |

## 2429/.. - CIGARO

~230V



*built-up*  
with extra thin cable Ø3mm

pendant - fixed - with Juba base - with LED driver

### Lamp type

5x LED 410lm CRI90 max. 4W

350mA

### Dimensions

L1200xB40xH1750 mm Cable 1500 mm

22°

Base L1200xB40xH40 mm

tube Ø28xH200 mm

### Materials

aluminum 1M | 2M | 14 | 14M  
brass 4 | 16  
Red copper 28 | 56

### Ref

| Ref             |         | Price €  |
|-----------------|---------|----------|
| 2429.1M.KX1     | NW   WW | 1.026,00 |
| 2429.2M.KX2     | NW   WW | 1.026,00 |
| 2429.4.2M.KX2   | NW   WW | 1.286,00 |
| 2429.14.2M.KX2  | NW   WW | 1.086,00 |
| 2429.14M.2M.KX2 | NW   WW | 1.086,00 |
| 2429.16.2M.KX2  | NW   WW | 1.146,00 |
| 2429.28.2M.KX2  | NW   WW | 1.201,00 |
| 2429.56.2M.KX2  | NW   WW | 1.336,00 |





2442/.. - CIGARO

=350mA



pendant - fixed - with 1,5m textile cable and strain relief on lampholder's side - without LED driver

**Lamp type**

3x LED 410lm CRI90 max. 4W

350mA

**Dimensions**

←→ Ø56xH312 mm

Cable 1500 mm

∧ 22°

tube Ø28xH300 mm

**Materials**

aluminum 1M | 2M | 14 | 14M

brass 4 | 16

Red copper 28 | 56

**Ref**

| Ref          |         | Price € |
|--------------|---------|---------|
| 2442.14M.TX2 | NW   WW | 598,00  |
| 2442.1M.TX1  | NW   WW | 526,00  |
| 2442.2M.TX2  | NW   WW | 526,00  |
| 2442.4.TX2   | NW   WW | 702,00  |
| 2442.14.TX2  | NW   WW | 598,00  |
| 2442.16.TX2  | NW   WW | 678,00  |
| 2442.28.TX2  | NW   WW | 694,00  |
| 2442.56.TX2  | NW   WW | 798,00  |

built-up

2443/.. - CIGARO

=350mA



pendant - fixed - with 1,5m textile cable and strain relief on lampholder's side - without LED driver

**Lamp type**

4x LED 410lm CRI90 max. 4W

350mA

**Dimensions**

←→ Ø84xH312 mm

Cable 1500 mm

∧ 22°

tube Ø28xH300 mm

**Materials**

aluminum 1M | 2M | 14 | 14M

brass 4 | 16

Red copper 28 | 56

**Ref**

| Ref          |         | Price €  |
|--------------|---------|----------|
| 2443.14M.TX2 | NW   WW | 760,00   |
| 2443.1M.TX1  | NW   WW | 670,00   |
| 2443.2M.TX2  | NW   WW | 670,00   |
| 2443.4.TX2   | NW   WW | 890,00   |
| 2443.14.TX2  | NW   WW | 760,00   |
| 2443.16.TX2  | NW   WW | 860,00   |
| 2443.28.TX2  | NW   WW | 880,00   |
| 2443.56.TX2  | NW   WW | 1.010,00 |

built-up

2444/.. - CIGARO

=350mA



pendant - fixed - with 1,5m textile cable and strain relief on lampholder's side - without LED driver

**Lamp type**

6x LED 410lm CRI90 max. 4W

350mA

**Dimensions**

←→ Ø84xH312 mm

Cable 1500 mm

∧ 22°

tube Ø28xH300 mm

**Materials**

aluminum 1M | 2M | 14 | 14M

brass 4 | 16

Red copper 28 | 56

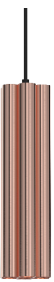
**Ref**

| Ref          |         | Price €  |
|--------------|---------|----------|
| 2444.14M.TX2 | NW   WW | 984,00   |
| 2444.1M.TX1  | NW   WW | 858,00   |
| 2444.2M.TX2  | NW   WW | 858,00   |
| 2444.4.TX2   | NW   WW | 1.166,00 |
| 2444.14.TX2  | NW   WW | 984,00   |
| 2444.16.TX2  | NW   WW | 1.104,00 |
| 2444.28.TX2  | NW   WW | 1.132,00 |
| 2444.56.TX2  | NW   WW | 1.334,00 |

built-up

2448/.. - CIGARO

=350mA



pendant - fixed - with 1,5m textile cable and strain relief on lampholder's side - without LED driver

**Lamp type**

3x LED 410lm CRI90 max. 4W

350mA

**Dimensions**

←→ Ø84xH312 mm

Cable 1500 mm

∧ 22°

tube Ø28xH300 mm

**Materials**

aluminum 1M | 2M | 14 | 14M

brass 4 | 16

Red copper 28 | 56

**Ref**

| Ref          |         | Price €  |
|--------------|---------|----------|
| 2448.14M.TX2 | NW   WW | 894,00   |
| 2448.1M.TX1  | NW   WW | 768,00   |
| 2448.2M.TX2  | NW   WW | 768,00   |
| 2448.4.TX2   | NW   WW | 1.076,00 |
| 2448.14.TX2  | NW   WW | 894,00   |
| 2448.16.TX2  | NW   WW | 1.014,00 |
| 2448.28.TX2  | NW   WW | 1.042,00 |
| 2448.56.TX2  | NW   WW | 1.244,00 |

built-up

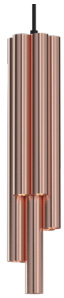






2447/.. - CIGARO

=350mA



pendant - fixed - with 1,5m textile cable and strain relief on lampholder's side - without LED driver

**Lamp type**

6x LED 410lm CRI90 max. 4W

350mA

**Dimensions**

↔ Ø84xH312 mm

Cable 1500 mm

∧ 22°

tube Ø28xH150 mm

tube Ø28xH200 mm

tube Ø28xH250 mm

tube Ø28xH300 mm

**Materials**

aluminum 1M | 2M | 14 | 14M

brass 4 | 16

Red copper 28 | 56

**Ref**

2447.14M.TX2

NW | WW

**Price €**

1.048,00

2447.1M.TX1

NW | WW

952,00

2447.2M.TX2

NW | WW

952,00

2447.4.TX2

NW | WW

1.356,00

2447.14.TX2

NW | WW

1.048,00

2447.16.TX2

NW | WW

1.164,00

2447.28.TX2

NW | WW

1.210,00

2447.56.TX2

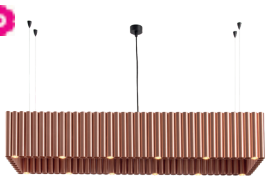
NW | WW

1.416,00

built-up

2480/.. - CIGARO

~230V



pendant - fixed - with LED driver

**Lamp type**

12x LED 410lm CRI90 max. 4W

350mA

**Dimensions**

↔ L1064xB252xH200 mm Cable 1500 mm

∧ 22°

**Materials**

aluminum 1M | 2M | 14 | 14M

brass 4 | 16

Red copper 28 | 56

**Ref**

2480.14M.2M

NW | WW

**Price €**

7.860,00

2480.1M

NW | WW

6.780,00

2480.2M

NW | WW

6.780,00

2480.4.2M

NW | WW

11.980,00

2480.14.2M

NW | WW

7.860,00

2480.16.2M

NW | WW

9.910,00

2480.28.2M

NW | WW

10.240,00

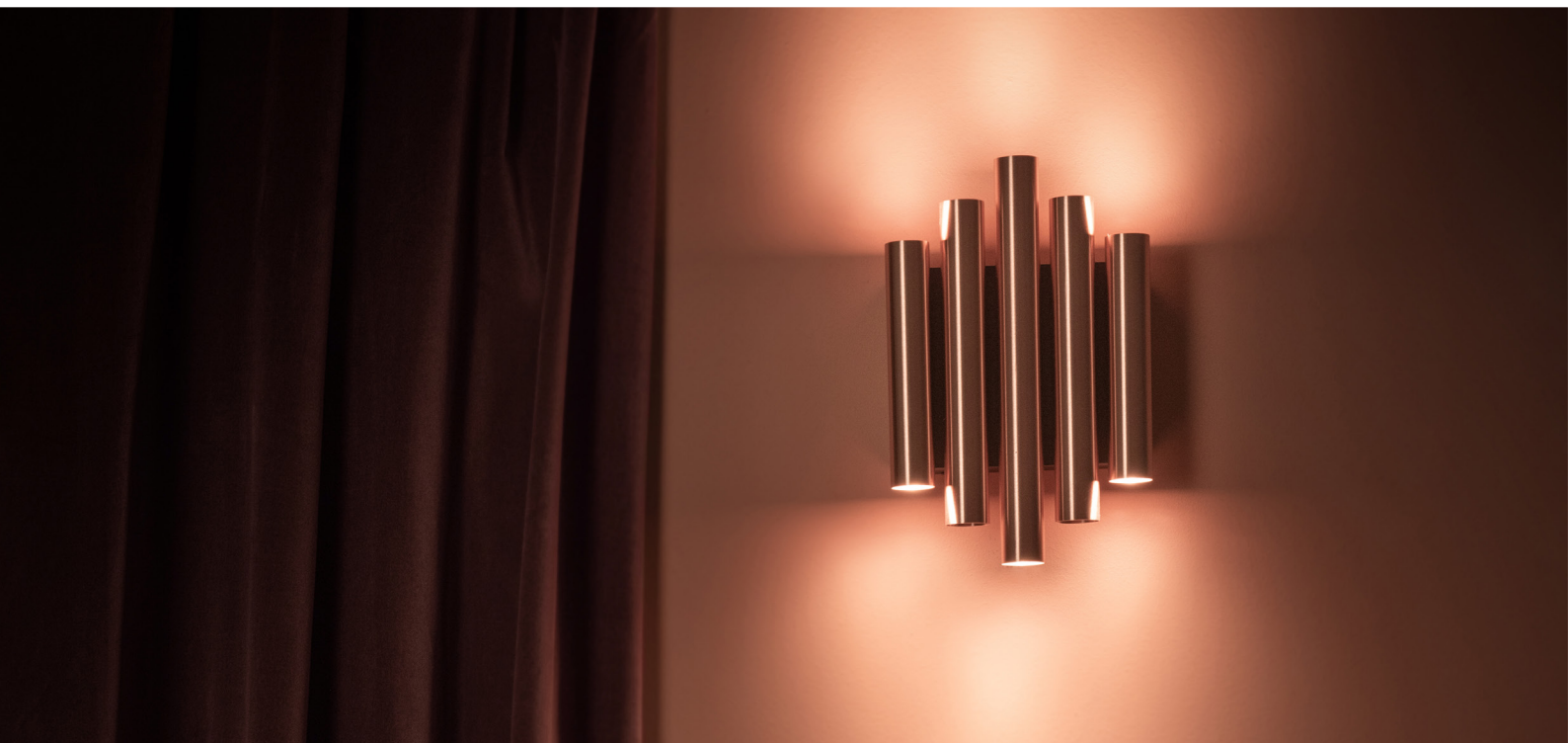
2480.56.2M

NW | WW

10.850,00

built-up





2435/.. - CIGARO

~230V



built-up wall light - fixed - with LED driver

**Lamp type**

2x LED 410lm CRI90 max. 4W 350mA

**Dimensions**

↔ L250xB40xD63 mm 22°

↙ L166xB40xD35 mm tube Ø28xH250 mm

**Materials**

aluminum 1M | 2M | 14 | 14M  
brass 4 | 16  
Red copper 28 | 56

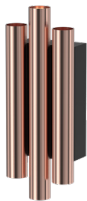
**Ref**

| Ref         |         | Price € |
|-------------|---------|---------|
| 2435.14M.2M | NW   WW | 240,00  |
| 2435.1M     | NW   WW | 226,00  |
| 2435.2M     | NW   WW | 226,00  |
| 2435.4.2M   | NW   WW | 284,00  |
| 2435.14.2M  | NW   WW | 240,00  |
| 2435.16.2M  | NW   WW | 252,00  |
| 2435.28.2M  | NW   WW | 254,00  |
| 2435.56.2M  | NW   WW | 288,00  |

built-up

2434/.. - CIGARO

~230V



built-up wall light - fixed - with LED driver

**Lamp type**

2x LED 410lm CRI90 max. 4W 350mA

**Dimensions**

↔ L250xB96xD63 mm 22°

↙ L146xB84xD35 mm tube Ø28xH200 mm

tube Ø28xH250 mm

**Materials**

aluminum 1M | 2M | 14 | 14M  
brass 4 | 16  
Red copper 28 | 56

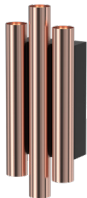
**Ref**

| Ref         |         | Price € |
|-------------|---------|---------|
| 2434.1M     | NW   WW | 454,00  |
| 2434.2M     | NW   WW | 454,00  |
| 2434.4.2M   | NW   WW | 592,00  |
| 2434.14.2M  | NW   WW | 492,00  |
| 2434.14M.2M | NW   WW | 492,00  |
| 2434.16.2M  | NW   WW | 522,00  |
| 2434.28.2M  | NW   WW | 536,00  |
| 2434.56.2M  | NW   WW | 624,00  |

built-up

2436/.. - CIGARO

~230V



built-up wall light - fixed - with LED driver

**Lamp type**

6x LED 410lm CRI90 max. 4W 350mA

**Dimensions**

↔ L250xB96xD63 mm 22°

↙ L146xB84xD35 mm tube Ø28xH200 mm

tube Ø28xH250 mm

**Materials**

aluminum 1M | 2M | 14 | 14M  
brass 4 | 16  
Red copper 28 | 56

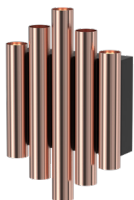
**Ref**

| Ref         |         | Price € |
|-------------|---------|---------|
| 2436.14M.2M | NW   WW | 632,00  |
| 2436.1M     | NW   WW | 594,00  |
| 2436.2M     | NW   WW | 594,00  |
| 2436.4.2M   | NW   WW | 732,00  |
| 2436.14.2M  | NW   WW | 632,00  |
| 2436.16.2M  | NW   WW | 662,00  |
| 2436.28.2M  | NW   WW | 676,00  |
| 2436.56.2M  | NW   WW | 764,00  |

built-up

2437/.. - CIGARO

~230V



built-up wall light - fixed - with LED driver

**Lamp type**

6x LED 410lm CRI90 max. 4W 350mA

**Dimensions**

↔ L250xB164xD63 mm 22°

↙ L121xB152xD35 mm tube Ø28xH150 mm

tube Ø28xH200 mm tube Ø28xH250 mm

**Materials**

aluminum 1M | 2M | 14 | 14M  
brass 4 | 16  
Red copper 28 | 56

**Ref**

| Ref         |         | Price €  |
|-------------|---------|----------|
| 2437.14M.2M | NW   WW | 876,00   |
| 2437.1M     | NW   WW | 818,00   |
| 2437.2M     | NW   WW | 818,00   |
| 2437.4.2M   | NW   WW | 1.044,00 |
| 2437.14.2M  | NW   WW | 876,00   |
| 2437.16.2M  | NW   WW | 918,00   |
| 2437.28.2M  | NW   WW | 958,00   |
| 2437.56.2M  | NW   WW | 1.096,00 |

built-up



2438/.. - CIGARO

~230V



built-up wall light - fixed - with LED driver

**Lamp type**

6x LED 410lm CRI90 max. 4W

350mA

**Dimensions**

L250xB164xD63 mm  $\angle 22^\circ$

L121xB152xD35 mm tube  $\varnothing 28 \times H150$  mm

tube  $\varnothing 28 \times H200$  mm

**Materials**

aluminum 1M | 2M | 14 | 14M  
brass 4 | 16  
Red copper 28 | 56

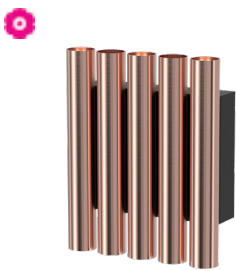
**Ref**

| Ref         | Price €  |
|-------------|----------|
| 2438.14M.2M | 870,00   |
| 2438.1M     | 814,00   |
| 2438.2M     | 814,00   |
| 2438.4.2M   | 1.022,00 |
| 2438.14.2M  | 870,00   |
| 2438.16.2M  | 904,00   |
| 2438.28.2M  | 953,00   |
| 2438.56.2M  | 1.084,00 |

built-up

2439/.. - CIGARO

~230V



built-up wall light - fixed - with LED driver

**Lamp type**

6x LED 410lm CRI90 max. 4W

350mA

**Dimensions**

L250xB164xD63 mm  $\angle 22^\circ$

L121xB152xD35 mm tube  $\varnothing 28 \times H200$  mm

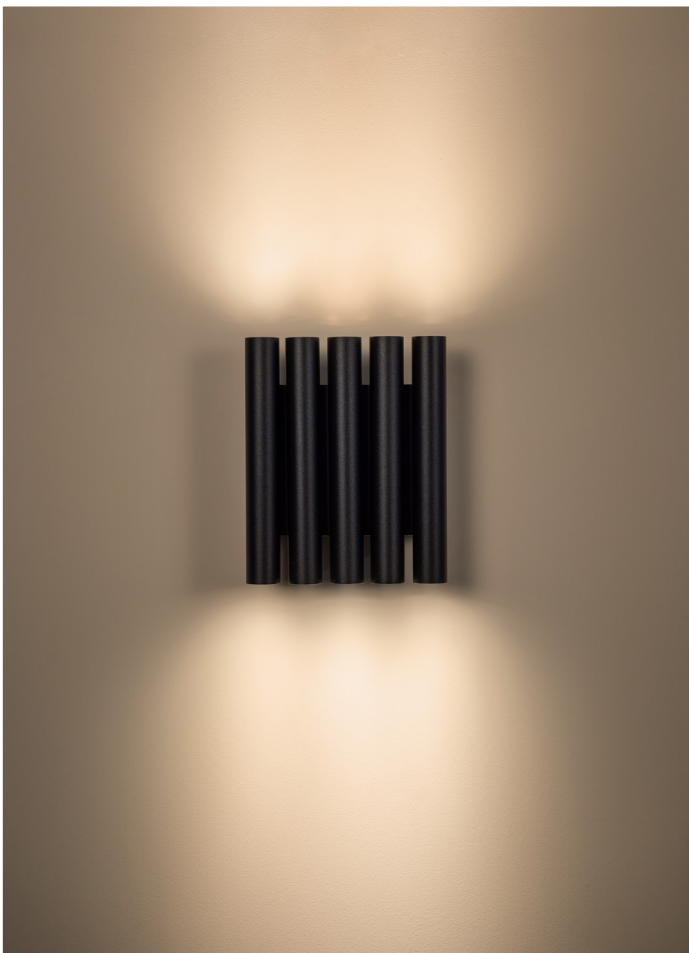
**Materials**

aluminum 1M | 2M | 14 | 14M  
brass 4 | 16  
Red copper 28 | 56

**Ref**

| Ref         | Price €  |
|-------------|----------|
| 2439.14M.2M | 890,00   |
| 2439.1M     | 790,00   |
| 2439.2M     | 790,00   |
| 2439.4.2M   | 1.030,00 |
| 2439.14.2M  | 890,00   |
| 2439.16.2M  | 910,00   |
| 2439.28.2M  | 963,00   |
| 2439.56.2M  | 1.100,00 |

built-up



2432/.. - CIGARO

~230V



IP20



built-up wall light - fixed

**Lamp type**

1x C35 E14 max. 5W

230V

**Dimensions**

L250xB40xD63 mm

∧ 22°

L170xB40xD35 mm

tube Ø28xH250 mm

**Materials**

aluminum

1M | 2M | 14 | 14M

brass

4 | 16

Red copper

28 | 56

**Ref**

2432.14M.2M

alu satin matt

**Price €**

146,00

2432.1M

white texture

132,00

2432.2M

black tex

132,00

2432.4.2M

shiny gold

190,00

2432.14.2M

alu satin

146,00

2432.16.2M

satin gold

158,00

2432.28.2M

rosé

160,00

2432.56.2M

red copper  
shiny

194,00

built-up  
Lamp not included

2433/.. - CIGARO

~230V



IP20



built-up wall light - fixed

**Lamp type**

3x C35 E14 max. 5W

230V

**Dimensions**

L250xB112xD58 mm

∧ 22°

L100xB60xD30 mm

tube Ø28xH150 mm

tube Ø28xH250 mm

**Materials**

aluminum

1M | 2M | 14 | 14M

brass

4 | 16

Red copper

28 | 56

**Ref**

2433.14M.2M

alu satin matt

**Price €**

370,00

2433.1M

white texture

338,00

2433.2M

black tex

338,00

2433.4.2M

shiny gold

470,00

2433.14.2M

alu satin

370,00

2433.16.2M

satin gold

392,00

2433.28.2M

rosé

424,00

2433.56.2M

red copper  
shiny

508,00

built-up  
Lamps not included





**Delighted to help you**

Groendreef 60 | 9880 Aalter | Belgium | T +32 9 374 19 51 | [www.psmlighting.be](http://www.psmlighting.be)